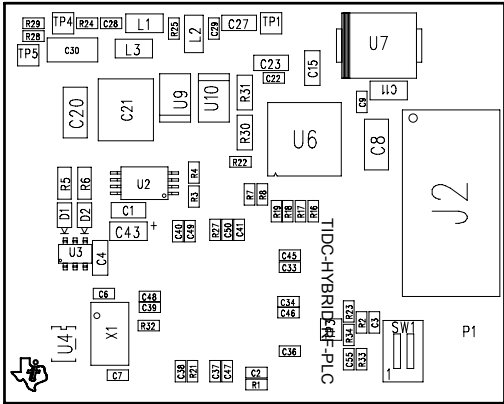


Notes:

- 1) Refer to BOM for stuffing options.
2) Observe polarity on diodes and capacitors.

REVISIONS				
REV.	REV.	DESCRIPTION	DATE	APPROVED



PRIMARY SIDE

TIDC-HYBRID-WMBUS-PLC

APPLICATION		CONTRACT NO.		DWN: www.WSTScorp.com 3/14		Texas Instruments, Inc.			
USED ON	NEXT ASSY.	UNLESS OTHERWISE SPECIFIED		CHK:		TITLE: ASSEMBLY DRAWING, SOMPLC-F28PLC84			
				P.E.:					
				DES.ENG.:					
				P.C.:					
				Q.C.:					
		1. TOLERANCES: LINEAR = : 0.26 (.010) ANGULAR = : 0.50°		C.M.:		SIZE C		CAGE CODE NO.	
				REL:					
				MFG:					
				ENG.MGR:					
				OTHER:					
MATERIAL: SEE NOTE FINISH: SEE NOTE		2. ALL DIMENSIONS ARE IN MM (INCHES).		OTHER:		DRAWING NO. SOMPLC-F28PLC84		REV: 1	
				OTHER:					
				OTHER:					
DO NOT SCALE DRAWING		3. INTERPRET DRAWING IN ACCORDANCE WITH DOD-STD-100.		SCALE: 1:1		SHEET 1 OF 2			